



|
A CULTURE OF
INSPIRATION
|



www.goldleafindia.in

ABOUT OUR COMPANY

...

Kagathara Industries LLP is a family-owned business established in 2022 with a commitment to quality, integrity, and long-term relationships. Built on strong family values and a vision for sustainable growth, we focus on delivering reliable products and tailored solutions that meet the evolving needs of our customers.

With a dedicated team and a forward-thinking approach, Kagathara Industries LLP continues to expand its capabilities while maintaining the trust and excellence our family name stands for.

Goldleaf
Go Green with Goldleaf

S I N C E

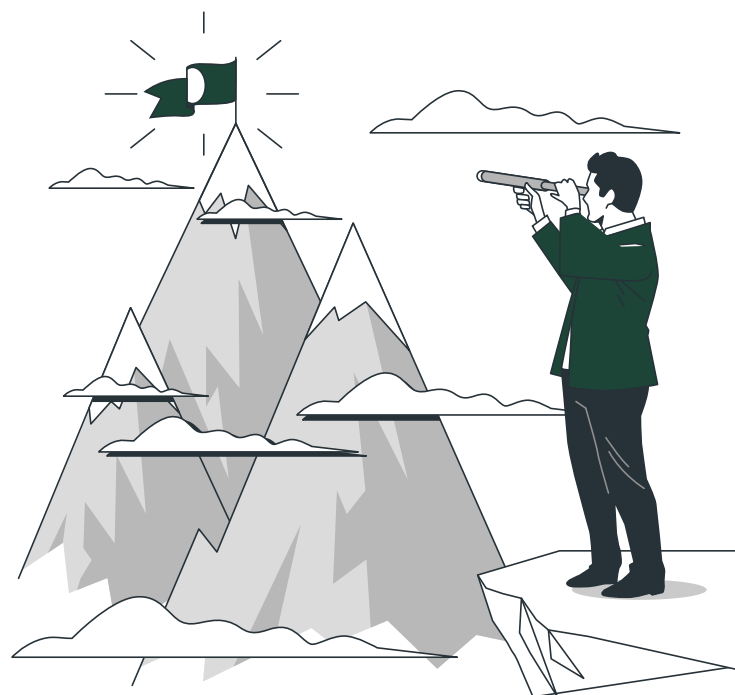
2022

STORY
DRIVEN WITH
PURPOSE



OUR VISION

To become a leading global brand in sustainable tableware by promoting environmentally responsible choices and reducing single-use plastic waste.



OUR MISSION

- To manufacture world-class, eco-friendly bagasse tableware using sustainable practices.
- To support global environmental goals by offering natural, biodegradable alternatives.
- To deliver consistent product quality and exceptional customer value.
- To innovate continuously and stay ahead in the eco-tableware industry.



OUR VALUE



QUALITY :

Ensuring every product meets strict international standards.

SUSTAINABILITY :

Protecting the environment through responsible manufacturing.



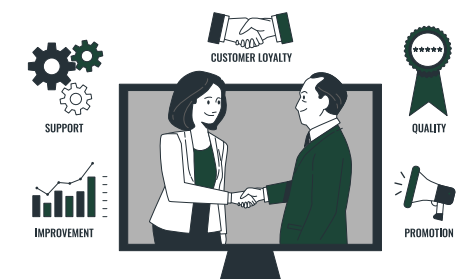
INNOVATION :

Constantly developing modern, effective, and green solutions.



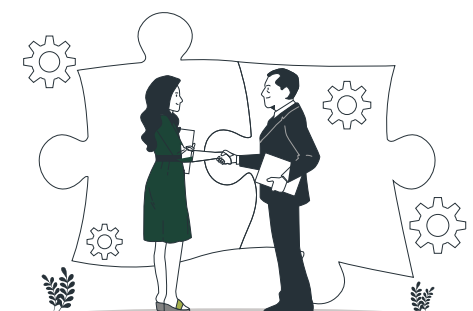
CUSTOMER COMMITMENT :

Building long-term, transparent partnerships



INTEGRITY :

Honest practices at every step of the supply chain.






MANUFACTURING EXCELLENCE

Our production facility is equipped with advanced machinery and strict quality control systems. We follow globally accepted standards to deliver safe, hygienic, and reliable products.


Production
Capacity **150** Tons


150+ Dedicated
Employees


A land area of
90,000 Sq.
Mtr.

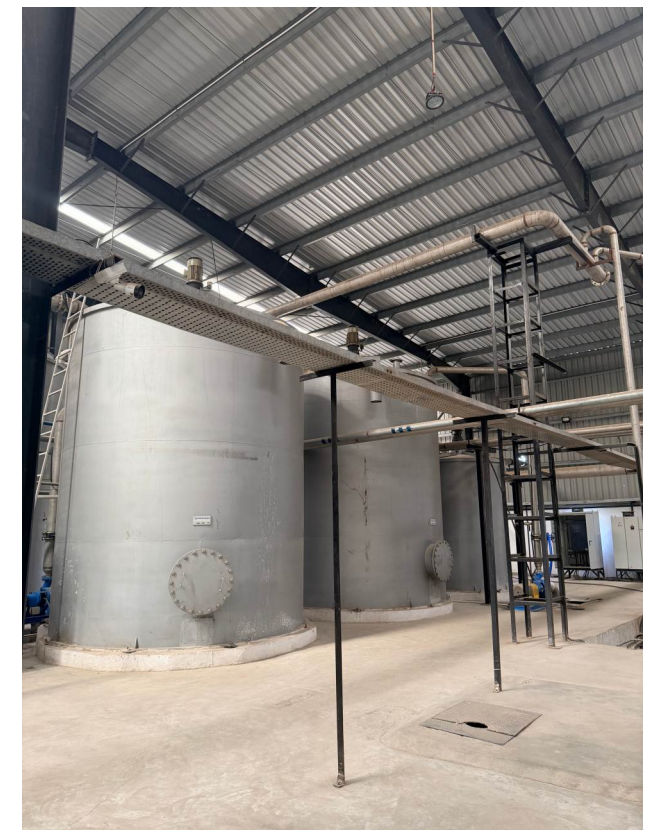
KEY STRENGTHS INCLUDE:

- Automated Production Lines
- In-house Quality Testing Lab
- Hygienic Packaging And Handling
- Bulk Production Capacity
- Custom Product Development Capabilities
- On-time Delivery For Domestic And Export Markets

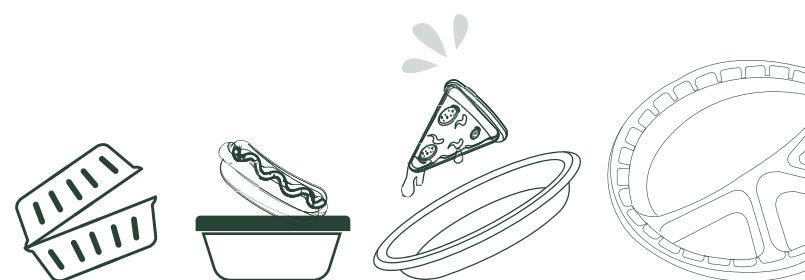


INNOVATION IS OUR IDENTITY

Goldleaf
Go Green with Goldleaf



WHAT WE MANU - FACTURE



Goldleaf offers a complete range of **100% compostable tableware**, including:

• PLATES



Round, Square,
Compartment Plates

• BOWLS



• MEAL TRAYS



• CONTAINERS & LIDS



• CLAMSHELL BOXES



• CUPS



• CUSTOMIZED FOOD-SERVICE PRODUCTS

ALL PRODUCTS ARE:

FOOD-GRADE
& TOXIN-FREE

MICROWAVE
-SAFE

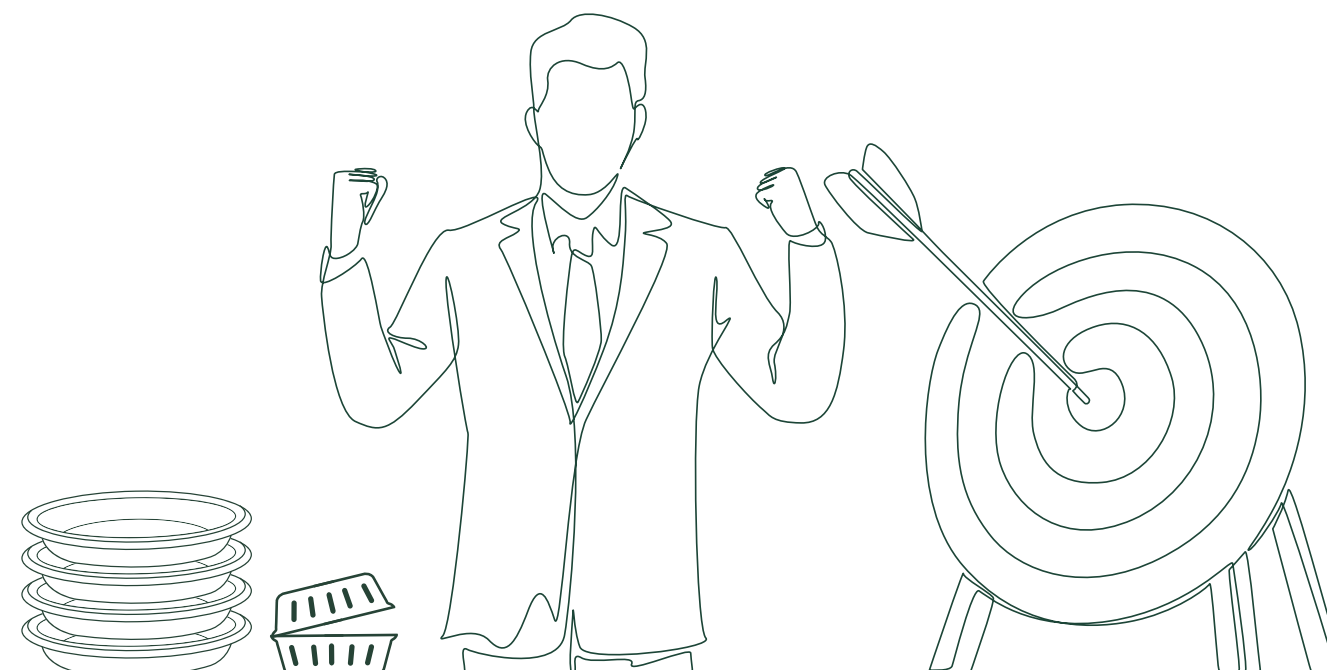
FREEZER-SAFE

STURDY,
LEAK-RESISTANT,
AND OIL-RESISTANT

FULLY
COMPOSTABLE
WITHIN MONTHS

FUTURE GOALS

Our production facility is equipped with advanced machinery and strict quality control systems. We follow globally accepted standards to deliver safe, hygienic, and reliable products.



WHY CHOOSE US

At **Goldleaf**, we don't just manufacture eco-friendly tableware—we **set a higher benchmark for quality, hygiene, and sustainability**. Here's why businesses across India and global markets trust us as their long-term partner:

• ADVANCED FULLY AUTOMATIC, ELECTRIC-HEATED MACHINES

Clean and uniform temperature control.

- Better surface finish and strength.
- Touch-free production for maximum hygiene.

This technology allows us to offer a premium grade of bagasse tableware that stands out.



• 100% DRY SUGARCANE PULP SHEETS

Higher durability and load-bearing strength

- Longer shelf life

This results in top-tier product quality suitable for domestic and export markets.

• SUPERIOR OIL & WATER RESISTANCE FORMULA

Each Goldleaf product is engineered with precise dosages of food-safe oil- and water-resistance agents, providing:

- Excellent greaseproof performance
- Leak-free, soggy-free experience
- Compatibility with all types of food—hot, cold, oily or liquid
- Strong heat resistance for Indian cuisine and global kitchens

• DEDICATED QUALITY CONTROL DEPARTMENT

We maintain a strict, multi-level QC process to ensure every product meets the highest standards.

Our QC team checks for:

- Strength & durability
- Oil & water resistance
- Microwave & freezer safety
- Shape accuracy & thickness
- Smooth finishing
- Hygiene parameters



Only approved products move to packaging

• HYGIENIC, TOUCH-FREE MANUFACTURING PROCESS

Goldleaf products are manufactured and packed in a clean and controlled environment using:

- Automatic forming
- Minimal manual handling
- Regular sanitization

• RELIABLE SUPPLY & CONSISTENT QUALITY

With advanced machinery and skilled manpower, we ensure:

- High-volume production
- Faster deliveries
- Zero product variation
- Year-round supply stability



SUSTAINABILITY AND EFFICIENCY



Being a waste product of sugarcane, items made from bagasse would be a relatively better sustainable substitute than those conventionally non-biodegradable and non-renewable disposable items, which usually include plastic and styrofoam. Key aspects of sustainability, specific to products made from bagasse, are:

• **RENEWABLE RESOURCE**

• **LOWER CARBON FOOTPRINT**

• **REDUCED WASTE**

• **COMPOSTABLE**

In general, regarding the use of bagasse products for disposable products, they may be more sustainable nonetheless, the key thing is to ensure that they are sustainably and responsibly produced.



The journey from a field of swaying sugarcane to a sustainable dish begins by gathering the leftover bagasse fibres after the harvest. These natural materials travel to a processing factory where they are refined into sturdy sheets before being molded by heat into a refined thermoformed bowl. Once your meal is finished, this eco friendly piece is returned to a compost heap where it naturally dissolves back into the earth. This thoughtful cycle ensures that every dish helps nourish the soil while protecting our world for generations to come.

GLOBAL EXPORTER OF BAGASSE PRODUCTS



Goldleaf India is a trusted exporter of sugarcane bagasse products, offering eco-friendly tableware and food packaging made from natural sugarcane pulp.

Our products are 100% compostable, biodegradable, and plastic-free, making them ideal for takeaway and food service.

We export bagasse plates, bowls, and containers worldwide, delivering reliable quality and supporting sustainable packaging.



USA



UK



UAE



MAURITIUS

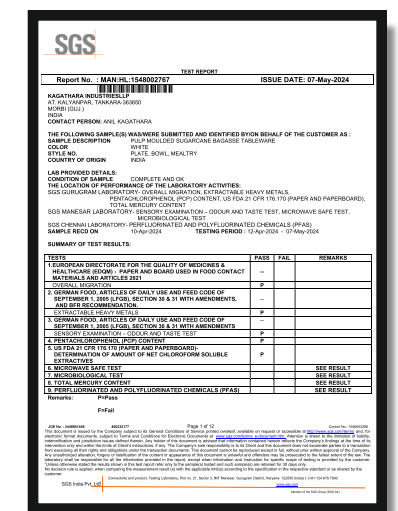


AUSTRALIA

CREDENTIALS & CERTIFICATIONS

Goldleaf India is a trusted exporter of sugarcane bagasse products, offering eco-friendly tableware and food packaging made from natural sugarcane pulp. Our products are 100% compostable, biodegradable, and plastic-free, making them ideal for takeaway and food service.

We export bagasse plates, bowls, and containers worldwide, delivering reliable quality and supporting sustainable packaging.



INTRODUCING EXCELLENT BAGASSE COLLECTION

A FUTURE WITHOUT WASTE

This collection represents a beautiful transformation where we take the fibrous remains of sugarcane and breathe new life into them. We believe that your tableware should tell a story of resilience and grace. Every piece in the Excellent Bagasse Collection is crafted to be as strong as it is gentle on the planet. When you touch these items, you feel the organic texture that sets them apart from the cold and sterile feel of plastic. It is a tactile reminder that elegance can be found in the most natural places.

01 **ROUND PLATES**

02 **COMPARTMENT
ROUND PLATES**

03 **SQUARE
COMPARTMENT
PLATE**

04 **BOWLS**

05 **CLAMSHELL**

06 **LIDS & GLASS**

07 **TAKEOUT
CONTAINERS**



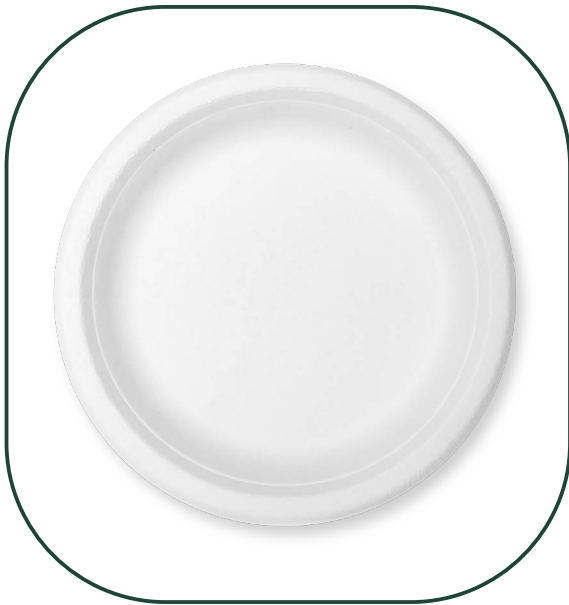
ROUND PLATES

12" ROUND PLATE

304mm x 26mm

WEIGHT : 24.5gm

PACKING : 25x20Pcs, 500Pcs/ Carton

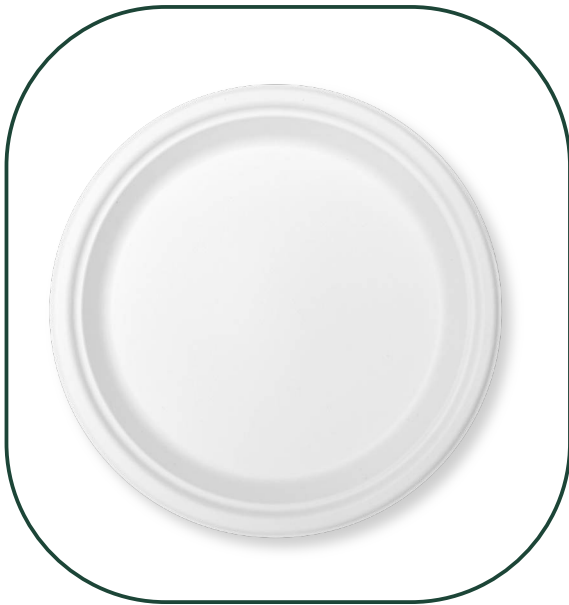


11" ROUND PLATE

279mm x 26mm

WEIGHT : 21gm

PACKING : 25x20Pcs, 500Pcs/ Carton

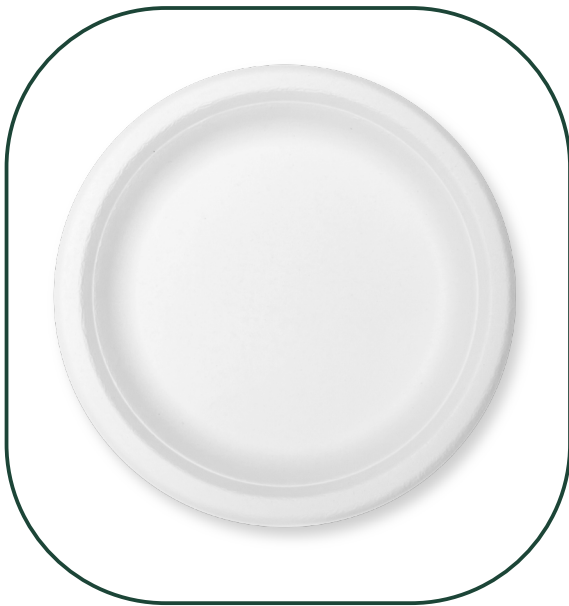


10" ROUND PLATE

254mm x 19.5mm

WEIGHT : 18gm

PACKING : 25x20Pcs, 500Pcs/ Carton





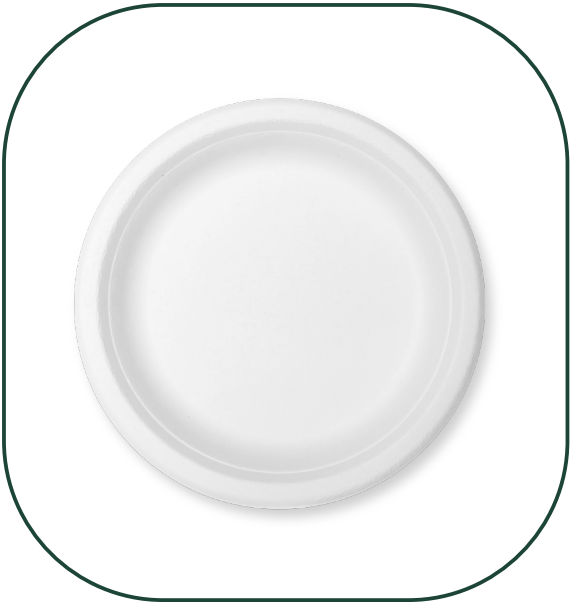
ROUND PLATES

9" ROUND PLATE

220mm x 18mm

WEIGHT : 14gm

PACKING : 25x20Pcs, 500Pcs/ Carton



7" ROUND PLATE

180mm x 18mm

WEIGHT : 8gm

PACKING : 25x40Pcs, 1000Pcs/ Carton



6" ROUND PLATE

155mm x 15mm

WEIGHT : 7gm

PACKING : 50x20Pcs, 1000Pcs/ Carton

COMPART-
MENT
ROUND
PLATES

12" 4CP ROUND PLATE

300mm x 25mm

WEIGHT : 26gm

PACKING : 25x20Pcs, 500Pcs/ Carton



9" 3CP ROUND PLATE

225mm x 21mm

WEIGHT : 15gm

PACKING : 25x20Pcs, 500Pcs/ Carton



11" 4CP ROUND PLATE

272mm x 28mm

WEIGHT : 24gm

PACKING : 25x20Pcs, 500Pcs/ Carton



10" 3CP ROUND PLATE

255mm x 24mm

WEIGHT : 19gm

PACKING : 25x20Pcs, 500Pcs/ Carton





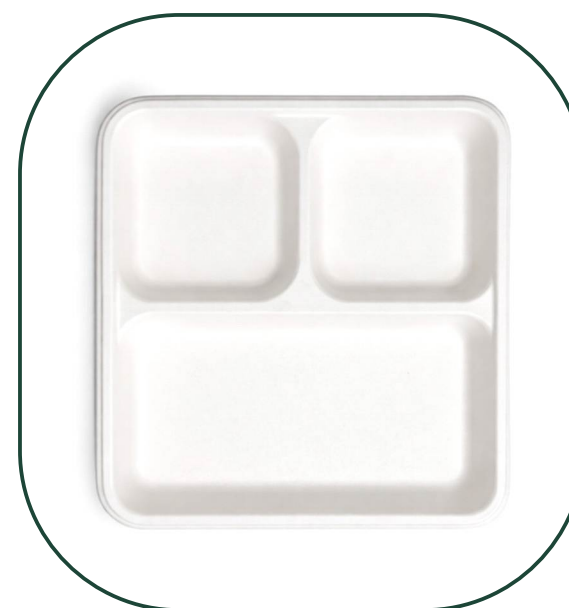
SQUARE COMPARTMENT PLATE

1-D TRAY

150mm x 21mm

WEIGHT : 7gm

PACKING : 50x30Pcs, 1500Pcs/Carton



9" 3CP SQUARE PLATE

215mm x 215mm x 24mm

WEIGHT : 19gm

PACKING : 25x20Pcs, 500Pcs/Carton

10" 3CP SQUARE PLATE

247mm x 233mm x 26.5mm

WEIGHT : 21gm

PACKING : 25x20Pcs, 500Pcs/Carton



SQUARE
COMPARTMENT
PLATE

5CP MEAL TRAY

150mm x 21mm

WEIGHT : 7gm

PACKING : 50x30Pcs, 1500Pcs/ Carton



6CP MEAL TRAY

304mm x 228mm x 33mm

WEIGHT : 37gm

PACKING : 25x16Pcs, 400Pcs/ Carton



9CP ROUND PLATE

318mm x 25.5mm

WEIGHT : 62gm

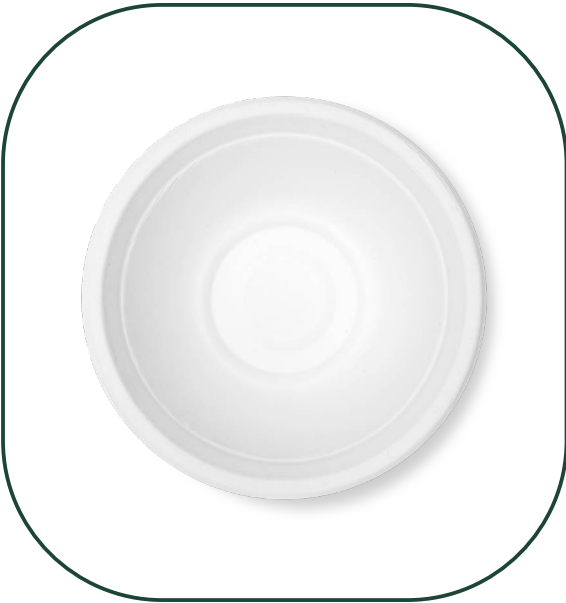
PACKING : 25x8Pcs, 200Pcs/ Carton



BOWLS

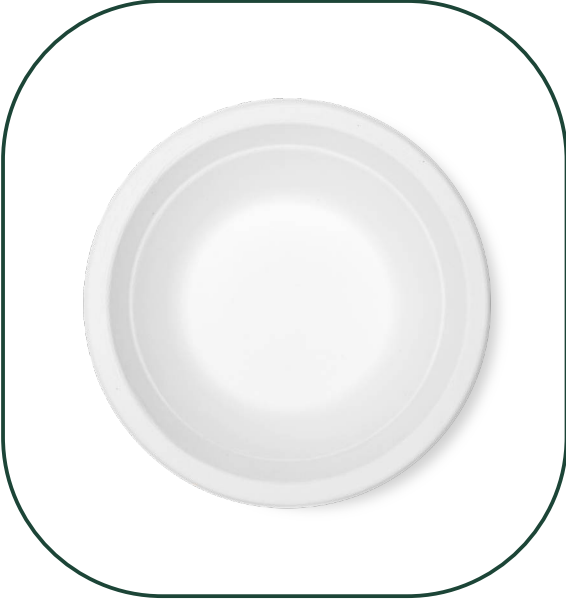


180ml BOWL
107mm x 40mm
WEIGHT : 5gm
PACKING : 50x20Pcs, 1000Pcs/ Carton



240ml BOWL
134mm x 39mm
WEIGHT : 7gm
PACKING : 50x20Pcs, 1000Pcs/ Carton

350ml BOWL
145mm x 38.8mm
WEIGHT : 8gm
PACKING : 50x20Pcs, 1000Pcs/ Carton



DONA
104mm x 104mm x 29.6mm
WEIGHT : 5gm
PACKING : 50x60Pcs, 3000Pcs/ Carton



CLAMSHELL

9X9 – 3 CP CLAMSHELL

230mm x 230mm x 50mm

WEIGHT : 44gm

PACKING : 200Pcs/ Carton



9x9 CLAMSHELL

230mm x 230mm x 45mm

WEIGHT : 44gm

PACKING : 200Pcs/ Carton



9x6 CLAMSHELL

152.5mm x 229.4mm x 41.19mm

WEIGHT : 30gm

PACKING : 250Pcs/ Carton





CLAMSHELL

6x6 CLAMSHELL

152mm x 149.5mm x 41mm

WEIGHT : 21gm

PACKING : 500Pcs/ Carton



8x8 CLAMSHELL

205mm x 210.3mm x 49.8mm

WEIGHT : 37gm

PACKING : 200Pcs/ Carton



8x8 -3 CP CLAMSHELL

204mm x 210mm x 49.8mm

WEIGHT : 37gm

PACKING : 200Pcs/ Carton

LIDS & GLASS

90MM LID

93.6mm x 24.6mm

WEIGHT : 4.5gm

PACKING : 50x40Pcs, 2000Pcs/ Carton



80MM LID

84.3mm x 24.9mm

WEIGHT : 5.5gm

PACKING : 50x40Pcs, 2000Pcs/ Carton



240ML GLASS

89.5mm X 75.5mm

WEIGHT : 9gm

PACKING : 50x20Pcs, 1000pcs/ Carton





TAKEOUT CONTAINERS



500ml RECTANGULAR CONTAINER

182mm x 142mm x 45mm

WEIGHT : 19gm

PACKING : 100x6Pcs, 600PCS/CARTON

500ml RECTANGULAR CONTAINER LID

180mm x 141mm x 8mm

WEIGHT : 12gm

PACKING : 100x6Pcs, 600Pcs/Carton



750ml RECTANGULAR CONTAINER

152mm x 197mm x 57mm

WEIGHT : 23gm

PACKING : 100x6Pcs, 600PCS/CARTON

750ml RECTANGULAR CONTAINER LID

196mm x 153mm x 8mm

WEIGHT : 13gm

PACKING : 100x6Pcs, 600Pcs/Carton

TAKEOUT
CONTAINERS



500ml ROUND BOWL
158mm x 56mm
WEIGHT : 15.5gm
PACKING : 100x6Pcs, 600PCS/CARTON

500ml ROUND BOWL LID
157mm x 7mm
WEIGHT : 10gm
PACKING : 100x6Pcs, 600Pcs/ Carton



1000ml ROUND BOWL
197mm x 65mm
WEIGHT : 22gm
PACKING : 100x6Pcs, 600PCS/CARTON

1000ml ROUND BOWL LID
196mm x 7mm
WEIGHT : 15gm
PACKING : 100x6Pcs, 600Pcs/ Carton



750ml ROUND BOWL
175mm x 65mm
WEIGHT : 18gm
PACKING : 100x6Pcs, 600PCS/CARTON

750ml ROUND BOWL LID
174mm x 7mm
WEIGHT : 12.5gm
PACKING : 100x6Pcs, 600Pcs/ Carton





K A G A T H A R A I N D U S T R I E S L L P

MFG: Bagasse Tableware



+91 9978833990



**Survey No. 114/P1 Latipar Road, At. Kalyanpar,
Tankara-363650, Morbi (Gujarat)**



info@goldleafindia.in



www.goldleafindia .in